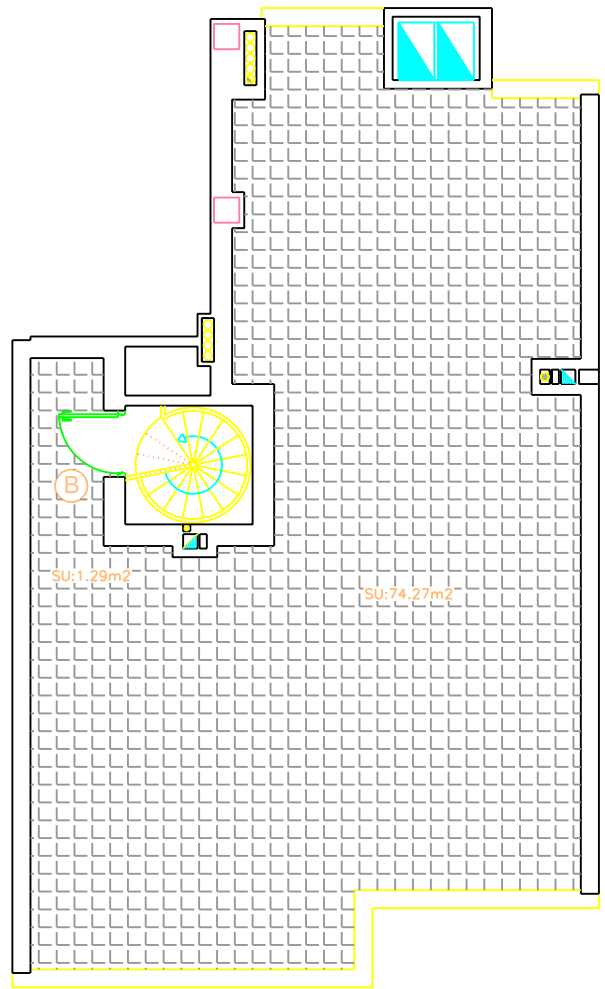


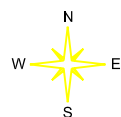
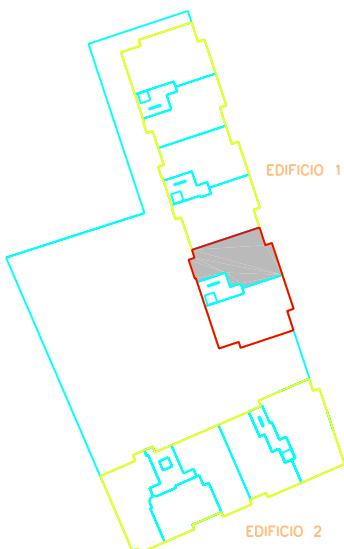
**PLANTA CUARTA.
SUPERFICIES UTILES**

SUP.UTIL INTERIOR = 72.12 m²
 SUP.UTIL EXTERIOR COMPUTABLE = 3.61 m²
 SUP.UTIL EXTERIOR TOTAL = 7.22 m²
 SUP.UTIL TOTAL COMPUTABLE = 75.73 m²



**PLANTA TERRAZA.
SUPERFICIES UTILES**

SUP.UTIL INTERIOR = 1.29 m²
 SUP.UTIL EXTERIOR TOTAL = 74.27 m²
 SUP.UTIL TOTAL COMPUTABLE = 1.29 m²



SUPERFICIES UTILES

SUP.UTIL INTERIOR = 73.41 m²
 SUP.UTIL EXTERIOR COMPUTABLE = 3.61 m²
 SUP.UTIL EXTERIOR TOTAL = 81.49 m²
 SUP.UTIL TOTAL COMPUTABLE = 77.02 m²

**PLANTA 4ª y TERRAZA. VIVIENDA TIPO B.
EDIFICIO 1 - ESCALERA 1**