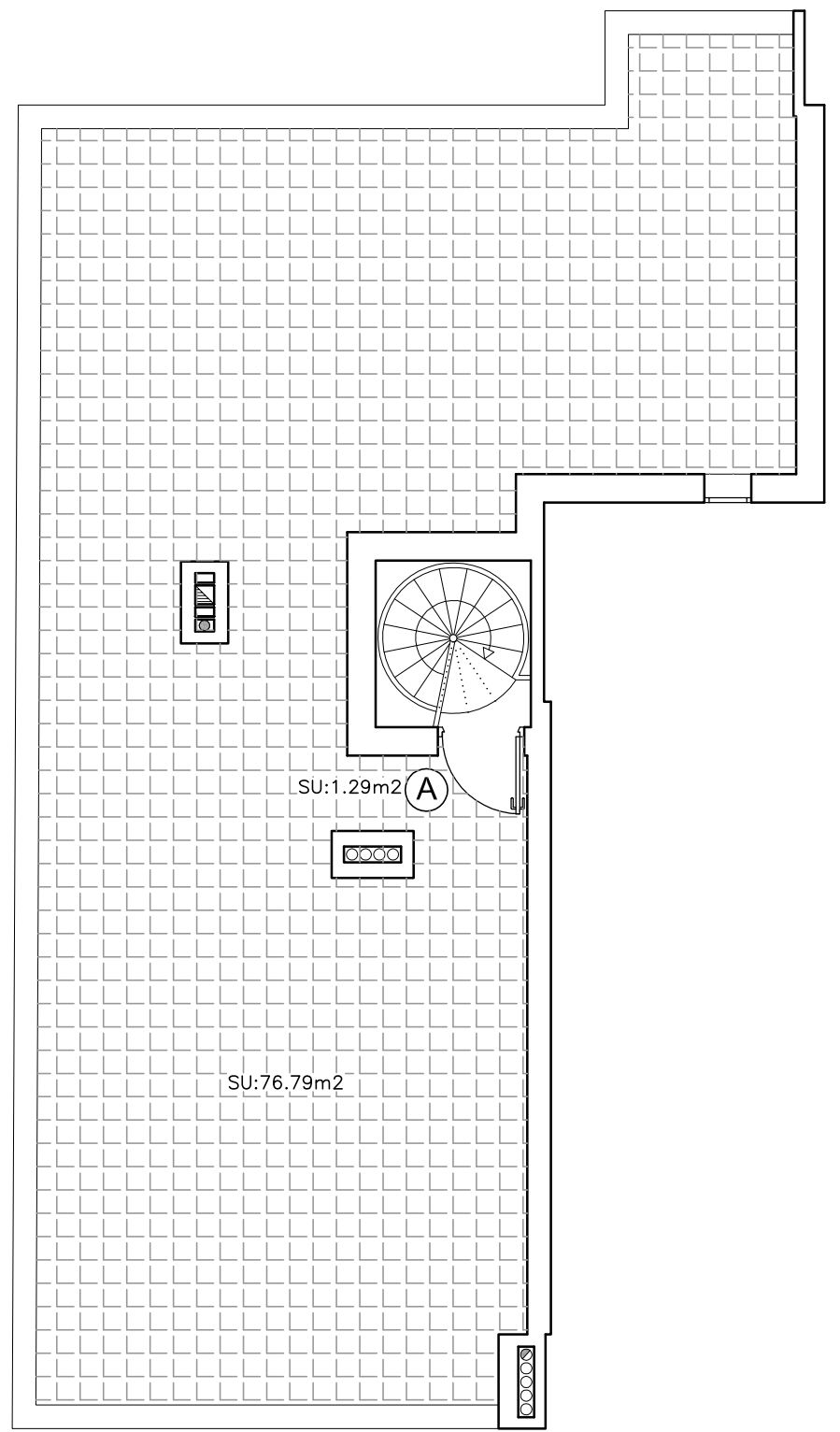


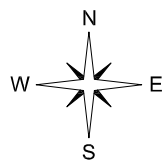
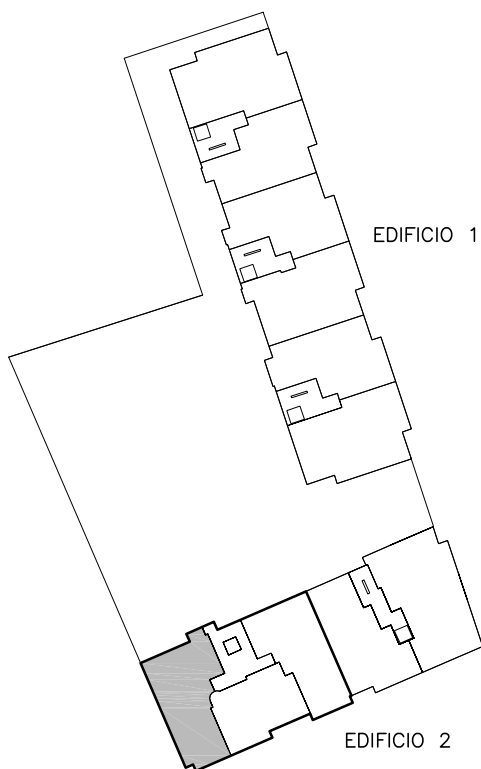
**PLANTA CUARTA.
SUPERFICIES UTILES**

SUP.UTIL INTERIOR = 76.30 m²
 SUP.UTIL EXTERIOR COMPUTABLE = 3.35 m²
 SUP.UTIL EXTERIOR TOTAL = 6.70 m²
 SUP.UTIL TOTAL COMPUTABLE = 79.65 m²



**PLANTA TERRAZA.
SUPERFICIES UTILES**

SUP.UTIL INTERIOR = 1.29 m²
 SUP.UTIL EXTERIOR TOTAL = 76.79 m²
 SUP.UTIL TOTAL COMPUTABLE = 1.29 m²



SUPERFICIES UTILES
 SUP.UTIL INTERIOR = 77.59 m²
 SUP.UTIL EXTERIOR COMPUTABLE = 3.35 m²
 SUP.UTIL EXTERIOR TOTAL = 83.49 m²
 SUP.UTIL TOTAL COMPUTABLE = 80.94 m²

**PLANTA 4^a y TERRAZA. VIVIENDA TIPO A.
EDIFICIO 2 - ESCALERA 1**